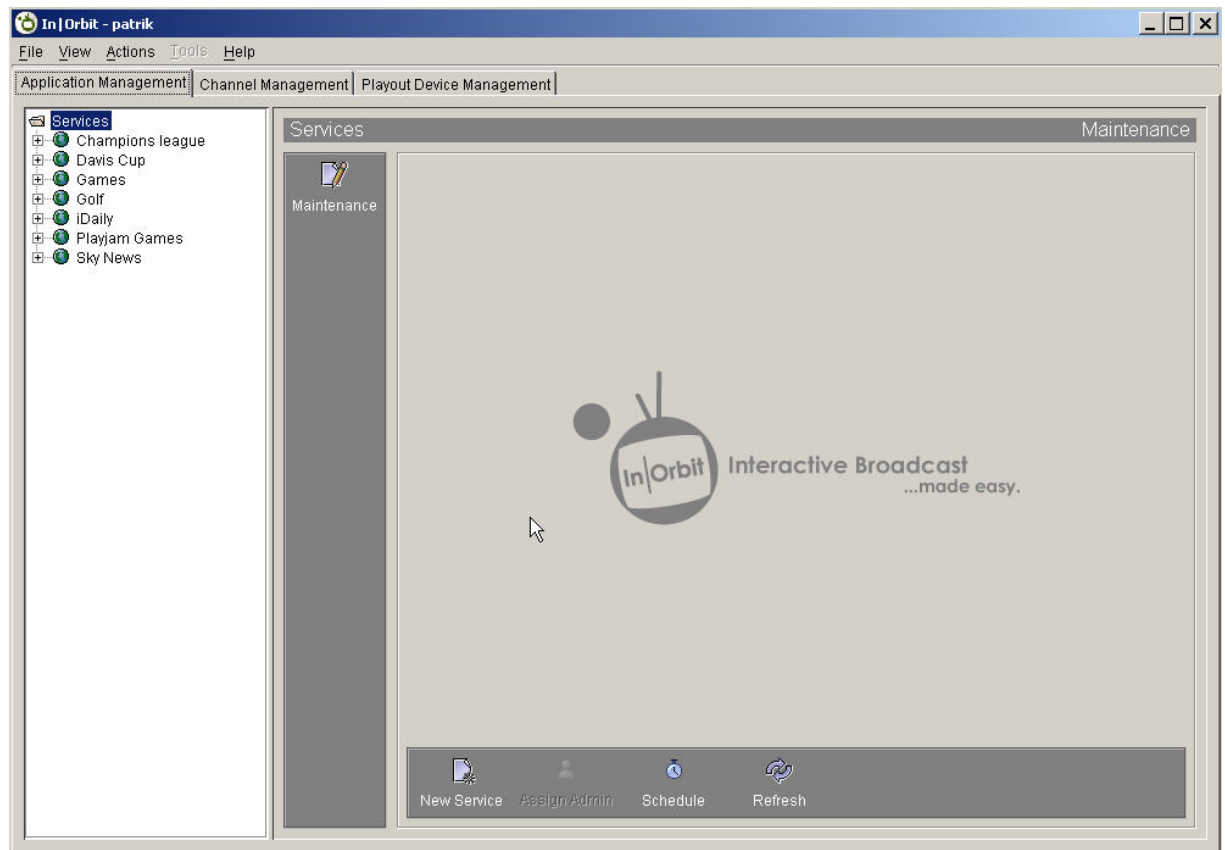


InOrbit Control loads quickly and easily.



The first screen you will see when you load InOrbit is the "Application Management" screen that shows the available interactive TV services in a tree menu on the left hand side.



If you work with InOrbit "out of the box", the first thing you may likely wish to do is set up the devices you will playout applications to. So we click the "Playout Device Management" tab, the third tab along the second row from the top of the screen.

