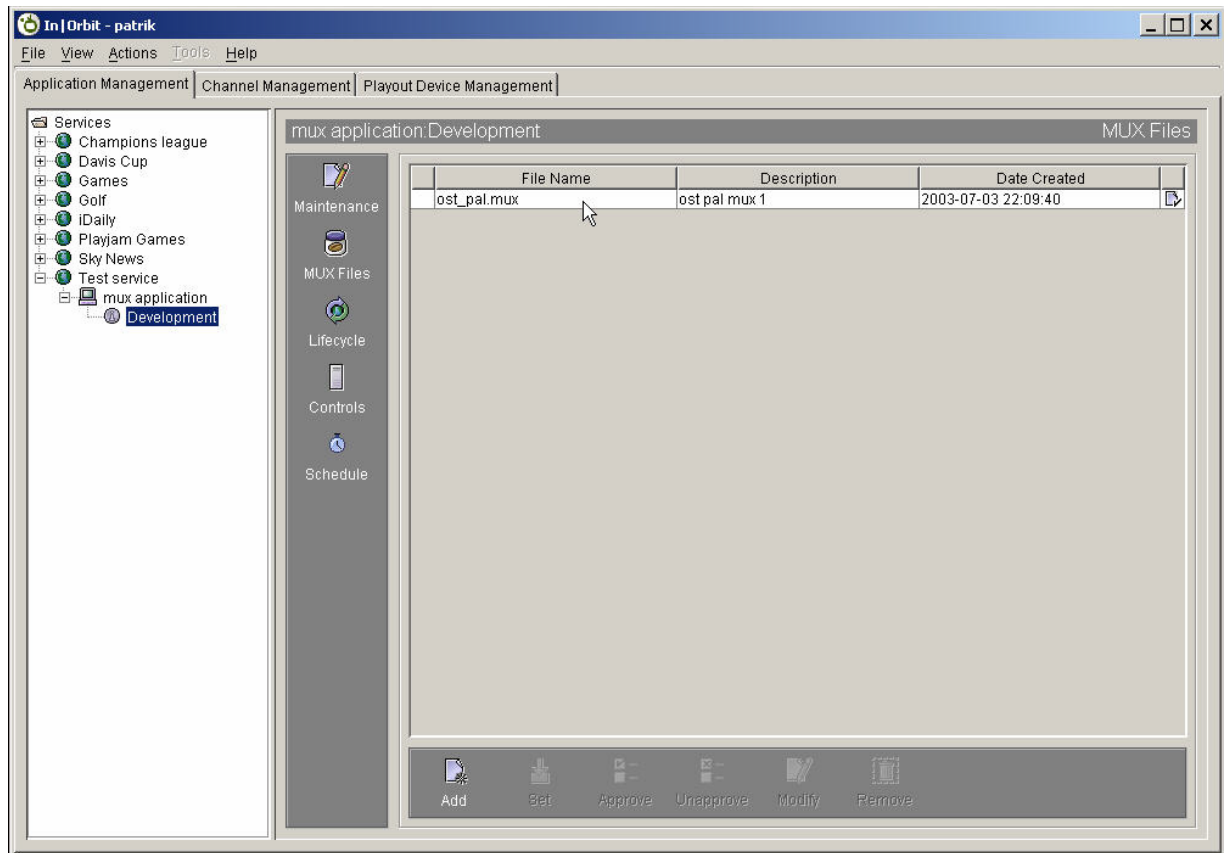
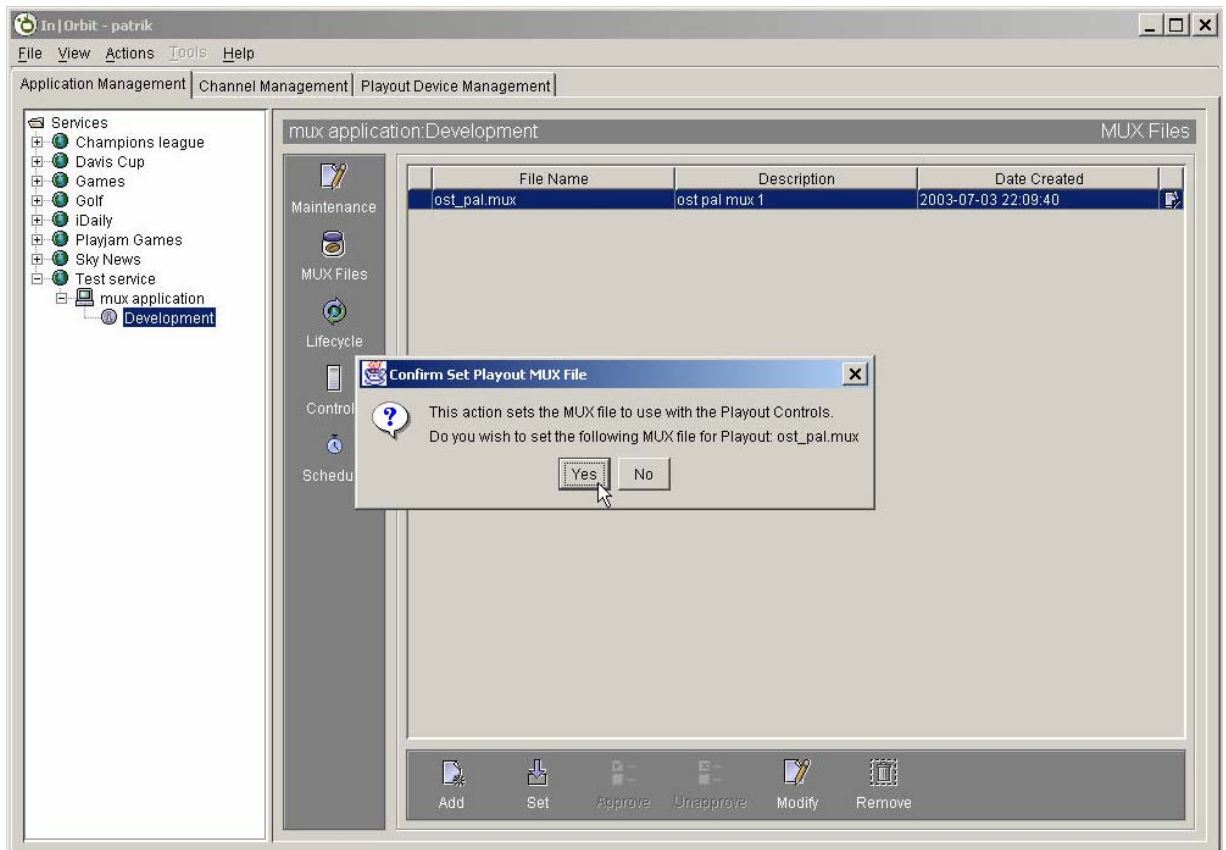
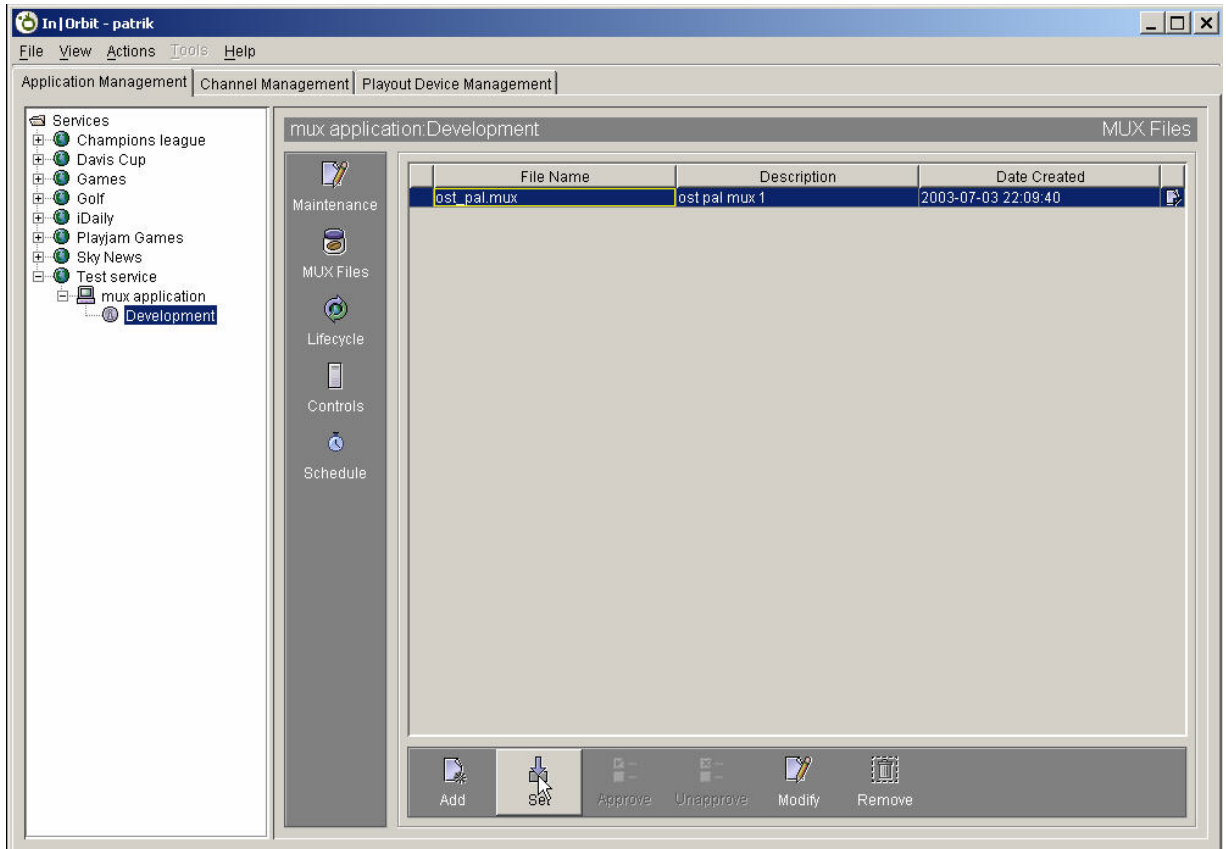


Manual payout of applications:

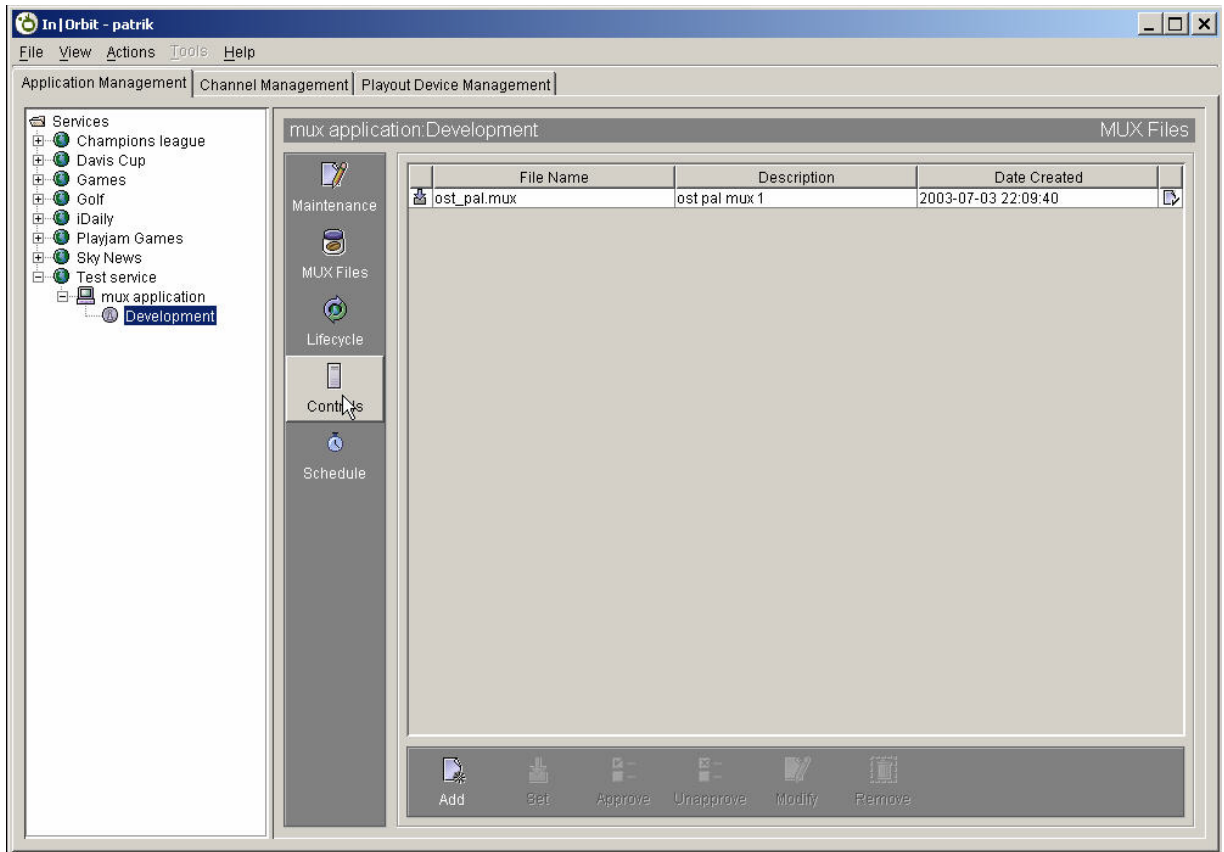
Once I have added my file, to manually play that out, I need to set it to be manually played out.



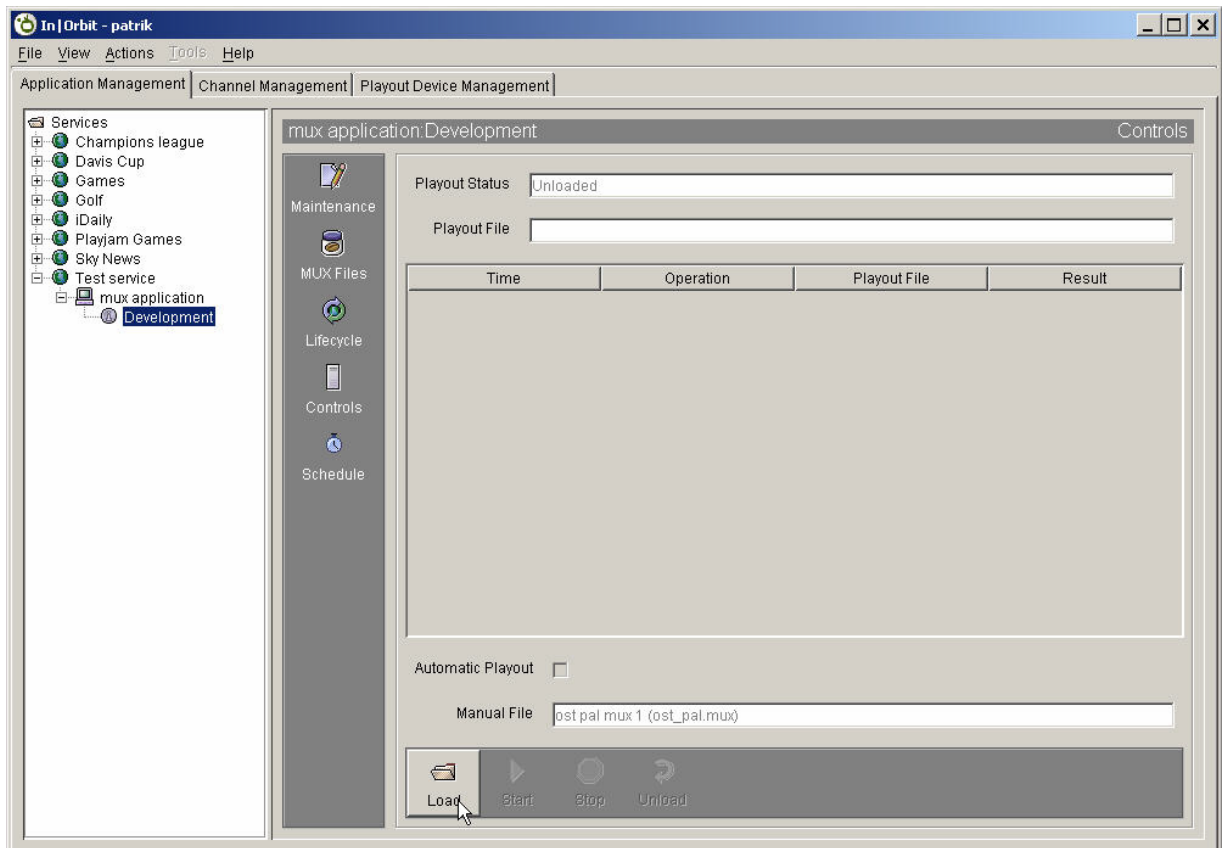
I mark the file by pressing set, which means that the application can be played out manually by the operator by a single mouse click.



To play this application out, I simply go to controls...



where I can load it to the Streamer and then start it and stop it manually.



This is mostly used for testing purposes while developing your application. You just add the MUX file as I have done, and then you load it, start it, stop it, and unload it on the set top box using the Streamer that is probably deployed together with your development platform.